

Parent Guide Book



2018-2019

Calvary Baptist Church
Derby, Ks
www.cbcks.org
[@Facebook.com\CBC.DERBY.AWANA](https://www.facebook.com/CBC.DERBY.AWANA)

Table of Contents

Letters to You	4
About Puggles	5
About Awana	6
Goals and Stats	7
Puggles Club Schedule	8
The 5 W's	9
Building Map	10
Emergency Map	11
Awana Calendar 2018-19	12

Calvary Baptist Church
Puggles Director: Grace Snider
Commander: Jim Schwab

*** Texting is Okay**

316.788.0864
316.305.6281
316.305.6281*
Awana@cbcks.org

Letters to You

From the Commander

Dear Parents,

As a parent myself, I know that raising a child in today's society requires a great commitment on the part of every parent: a commitment to provide the best possible childhood experiences for them in education, in moral and spiritual training, in relationships with their peers, and in relationships with adult role models. I believe that Awana can help you provide your children with these necessities through adult-directed games, Scripture memorization, and Spirit-lead Bible teaching.

Our goal in Awana is
**To reach boys and girls with the Gospel of Christ
 and train them to serve Him.**

This goal reflects the direction of 2 Timothy 2:15
**Study to show thyself approved unto God,
 a workman that needeth not to be ashamed,
 rightly dividing the word of truth.**

With your commitment and support, these goals are achievable. I look forward to serving your family through this ministry in the 2018-19 Awana year, and God bless you and your family.

Your Awana Commander,
 Jim Schwab

From the Cubbies Director

Dear Parents,

Puggles are at the age where things are new and exciting, and they are learning so much! We want to use this time to give them a firm foundation by teaching them about God's love for them and His creation.

Thank you for the opportunity to work with your child. We look forward to having a great year in Puggles!

Your Puggles Director,
 Grace Snider

About Puggles

**Puggles is a part of the Awana program
 for children ages 2-3 years old.**

In Puggles, children are welcomed each week with play time, songs and simple crafts and activities. Leaders present age-appropriate lessons using large, colorful teaching cards, finger puppet plays and more.

Lessons teach and reinforce four basic biblical precepts

God Made Everything and Saw That It Was Good

God is Love

God Loves Me All the Time

Give Thanks

Puggles do not have to say new verses each week, but rather concentrate on learning three verses throughout the whole year that pertain to the lessons. Special take-home cards that correspond to each week's lesson help parents nurture their child's faith at home.

**Participating in Puggles will give your child a head start on
 the path to loving and following God for life.**

Puggles Club Expenses Uniforms and Books

Puggles are required to purchase a shirt and Take Home Cards.
 Visit the Awana website for optional gear, apparel or gifts.

Puggles Shirt	\$11.00
Puggles at Home	\$14.00
Puggles Backpack (optional)	\$9.00

Please talk to the Commander if the purchase of these items presents a problem for your family. We will do whatever we can to help you.

About Awana

A
W
A
N
A

p
r
o
v
i
d
e
d

W
o
r
k
m
e
n

A
r
e

N
o
t

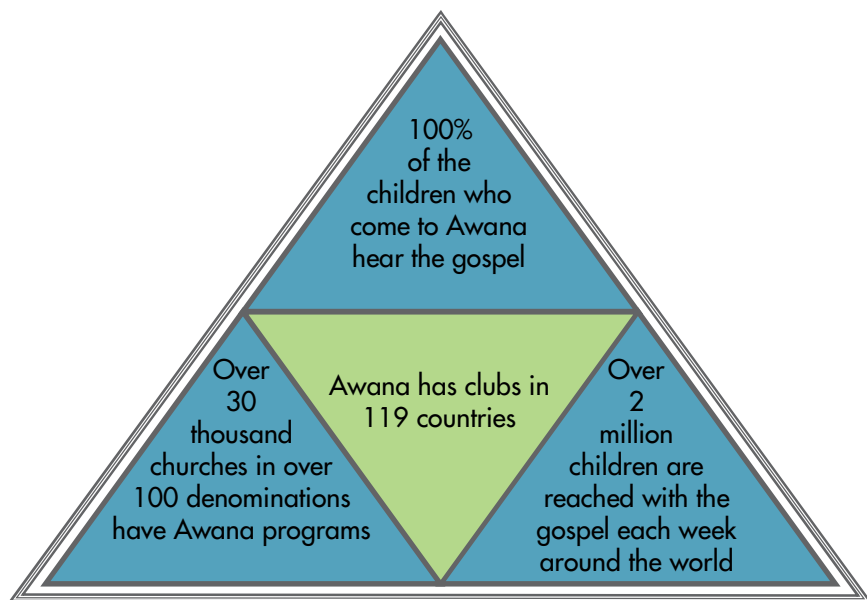
A
s
h
a
m
e
d

The word "Awana" is an acrostic that comes from the first letters of a phrase found in 2 Timothy 2:15

Awana is an international, non-denominational, Bible-centered youth organization that provides weekly clubs for children. It operates through thousands of local churches that share the Awana vision for evangelical outreach and effective discipleship of our young people. The goals of Awana may be effectively summarized by these words from our pledge,

[Our] goal is to reach boys and girls with the Gospel of Christ, and train them to serve Him.

Awana provides a structured and disciplined program of activities that includes group games, Bible lessons, scripture memorization, and awards.



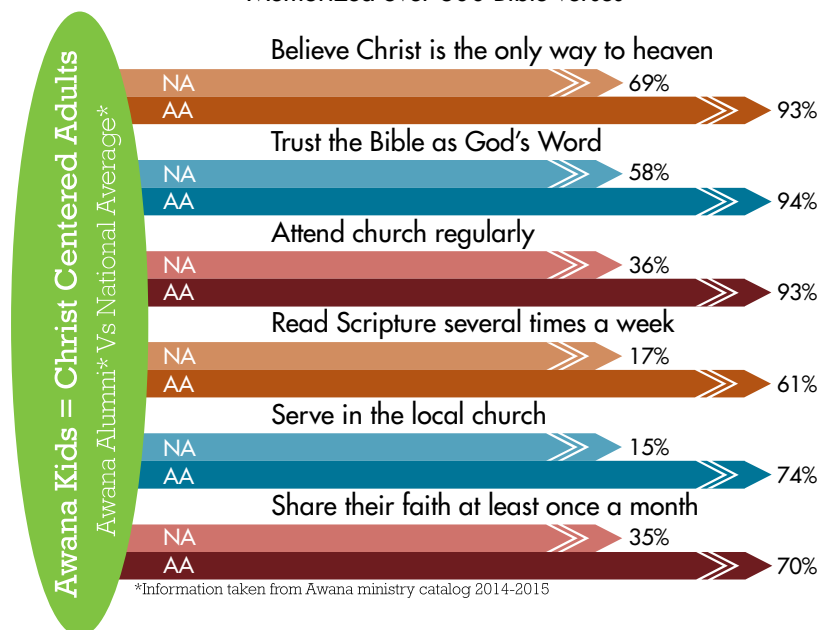
Goals and Stats

Awana - Equipping kids with a life-lasting faith in Christ

Goals of Awana at each age:	
Preschool	Learning respect for God and the authority of His Word
K - 2nd	Building a biblical knowledge base
3rd - 5th	Learning how to live in God's grace and how to show grace to others
Middle School	Learning to follow the calling and will of God
High School	Developing perspective to trust in God's sovereignty over all things

By completing all levels of the Awana program, your child will have:

Read all 66 books of the Bible at least once
Memorized over 800 Bible verses



Puggles Club Schedule

6:20-6:30 Check-In Park Place

Parents will check their children in electronically via the standing kiosks that are located in the Park Place Courtyard.

6:30-6:45 Free Play

6:45-7:00 Bible Lesson

7:00-7:15 Game Time

7:15-7:25 Snack Time

7:25-7:40 Coloring

7:40- 7:50 Puppet Skit

7:50-8:00 Singing Songs

8:00 Clubber Check-Out Park Place

Parents will need to check-out their children with the receipt they recieved at check-in.

The 5 W's

Who may come:

Any child that will be at least 2 years old by September 1st.

What to wear:

Uniform Shirt

When:

Wednesday evenings 6:30-8:00
August 22nd through May 8th
(see calendar)

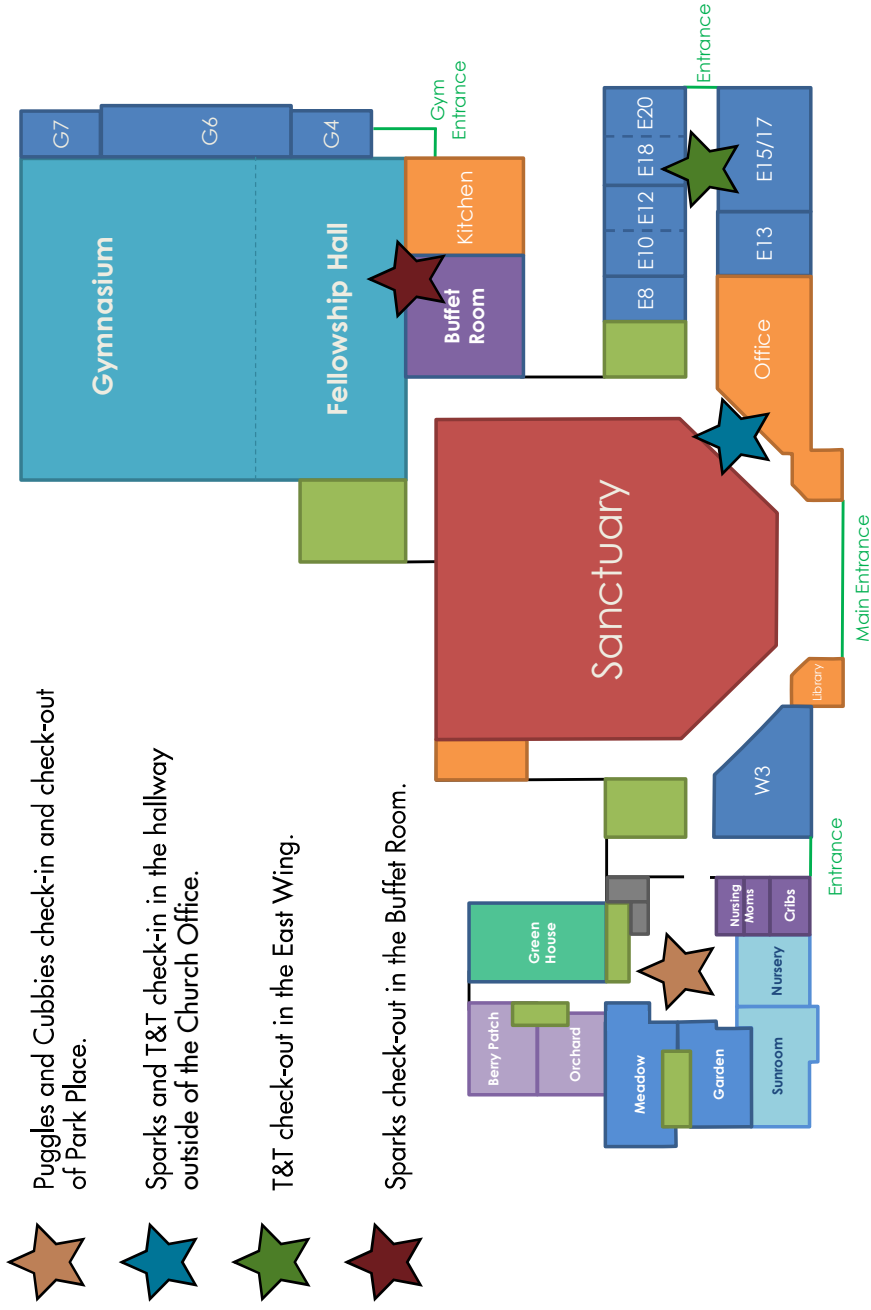
Where:

Calvary Baptist Church
1636 E Patriot Ave
Derby, KS 67037
316.788.0864

Why:

That all children may come to know, love,
and serve the Lord Jesus Christ.

Building Map



Lock Down Situation

1. Lock all access points to the room you are in.
2. Drop blinds to cover the door windows.
3. Move people to the least visible area.
4. Turn off the lights.
5. Remain calm and quiet.
6. Wait for the "all clear" notification.

Fire Emergency

Alarms will sound and strobes will flash

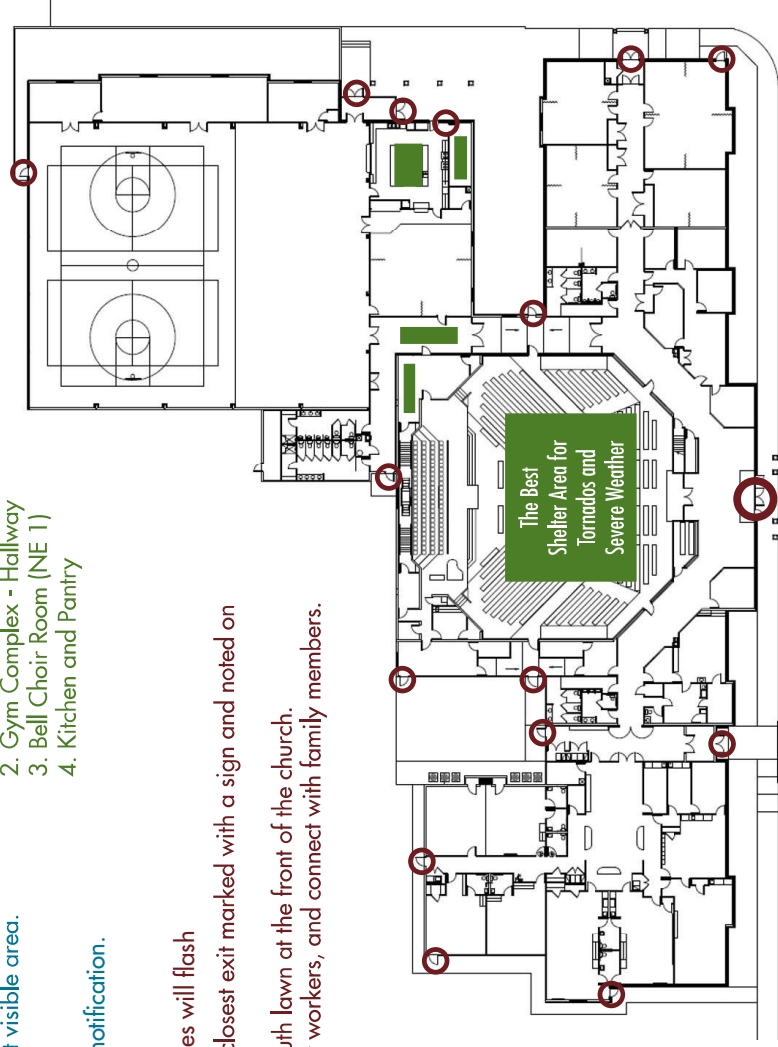
1. Exit the Building by the closest exit marked with a sign and noted on the map with red.
2. Proceed safely to the south lawn at the front of the church.
3. Stay clear of emergency workers, and connect with family members.

**In case of FIRE,
go directly to the
front lawn.**

Severe Weather / Tornadoes

Proceed to the areas designated by **Green**:

1. Sanctuary - South (back) of the Auditorium
2. Gym Complex - Hallway
3. Bell Choir Room (NE 1)
4. Kitchen and Pantry



Emergency Map

Awana Calendar 2018-19

8/22/18	Week 1			
8/29/18	Week 2			
9/5/18	Week 3			
9/12/18	Week 4			
9/19/18	Week 5			Crazy Sock Night
9/26/18		No Club		In-Service Night 1
10/3/18	Week 6			
10/10/18	Week 7		Fall Food Drive	
10/17/18	Week 8	Plateau 1	Fall Food Drive	Pastor Night
10/24/18	Week 9		Fall Food Drive	Neon Night
10/31/18		No Club		Fall Harvest
11/7/18	Week 10		Fall Food Drive	
11/14/18	Week 11		Fall Food Drive	
11/21/18		No Club		Thanksgiving Break
11/28/18	Week 12			
12/5/18	Week 13			
12/12/18	Week 14			
12/19/18	Week 15			Christmas Party
12/26/18		No Club		Winter Break
1/2/19	Week 16	Plateau 2		
1/9/19	Week 17			
1/16/19	Week 18			Sports Night
1/23/19		No Club		In-Service Night 2
1/30/19	Week 19		Awana Go	
2/6/19	Week 20		Awana Go	
2/13/19	Week 21		Awana Go	
2/20/19	Week 22		Awana Go	Crazy Hair Night
2/27/19	Week 23	Plateau 3	Awana Go	
3/6/19	Week 24		Awana Go	
3/13/19		No Club		Spring Break
3/20/19	Week 25			Pie Night
3/27/19	Week 26			
4/3/19	Week 27			
4/10/19	Week 28			
4/17/19	Week 29			Crazy Hat Night
4/24/19	Week 30			
5/1/19	Week 31			
5/8/19	Week 32	Plateau 4		
5/15/19				Awards Night